

materials for the yacht industry

made in italy



bencore[®]
DESIGN SOLUTIONS

MIA
MATERIALI INNOVATIVI X L'ARCHITETTURA

Prodotti tecnici Technical products



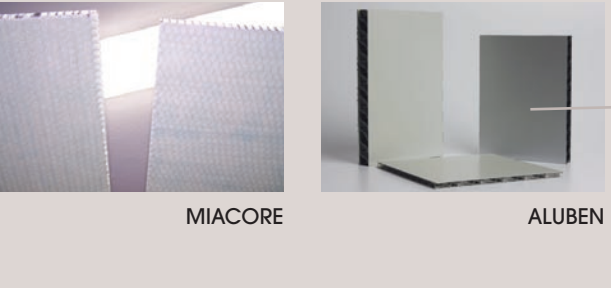
ALUBEN
Core: Alveolare termoplastico in policarbonato
Thermoplastic honeycomb in polycarbonate
Pelli/Skins: Alluminio bi-primerizzato 0.5 mm spessore
Aluminium bi-primerized 0.5 mm thickness
Dimensioni/Sizes: 1250x3050 mm (misure grezze non rifilate/raw sizes)

ALUBEN	DATI TECNICI - TECHNICAL DATA														
	STANDARD PANELS			TOLERANCES			OTHERS					MECHANICAL PROPERTIES			
code	length (mm)	width (mm)	thickness (mm)	length (mm)	width (mm)	thickness (mm)	fire class (DM 26/6/84, 3/9/01)	coefficient of thermal expansion (mm/mK)	service temperature (°C)	weight per unit area (kg/m ²)	thermal insulation U-value (W/m ² ·K)	sound insulation Rw (db)	modulus of elasticity UNI-EN 310 (N/mm ²)	bending strength UNI-EN 310 (N/mm ²)	compressive strength (N/mm ²)
ALUBEN 20	3050	1250	20	± 1	± 1	± 0,5	class 1	0,0024	-10°+70°	6,5	4,6	21,4	5800	33	1,2

MIACORE
Core: Nido d'ape d'alluminio lega 3003
Aluminium honeycomb league 3003
Dim. celle/Cells sizes: (1/4" - 6.3 mm; 3/8" - 9.5 mm)
Pelli/Skins: Laminato in tessuto di vetro epossidico spessore 0.25 mm
Laminated in epoxy glass textile thickness 0.25 mm
Dimensioni/Sizes: 1250x2500 mm; 1250x3000 mm; 1500x3000 mm

MIACORE	DATI TECNICI - TECHNICAL DATA										
	STANDARD PANELS			MECHANICAL PROPERTIES							
code	length (mm)	width (mm)	thickness (mm)	weight per unit area (kg/m ²)	compressive strength (N/mm ²)	max load N	deflection at 445 N	impact resistance	climbing drum peel I/75		
MIACORE 6	2500/3000	1250/1500	6.0	1,4	> 2,5	> 900	20*	good	> 450		
MIACORE 15	2500/3000	1250/1500	15.0	1,8	> 2,5	> 1500	16,0	good	> 450		

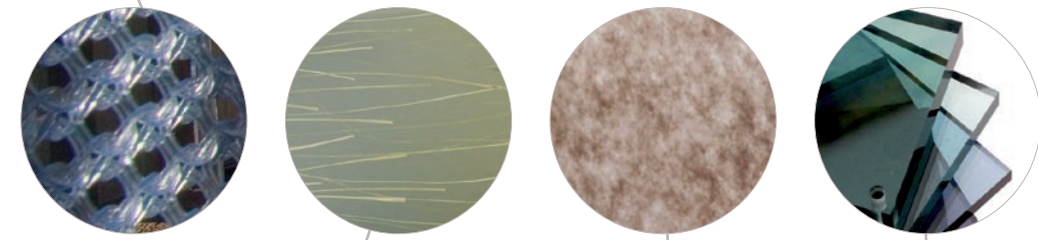
cell size = 6,35 mm - Density = 56 kg/m³
 (*) this value is calculated at the maximum load Mechanical test procedures to MIL - STL - 401



Kaynemaile™
 Seamless Mesh

Prodotti decorativi Decorative Products

KAYNEMAILE
PANELITE
LUMICOR
LASTRA ACRILICO COMPATTA



Lumicor®

PANELITE



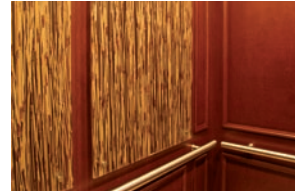


photo: courtesy of Cantieri Navali del Tirreno Srl




bencore[®]
DESIGN SOLUTIONS

MIA[®]
MATERIALI INNOVATIVI X L'ARCHITETTURA